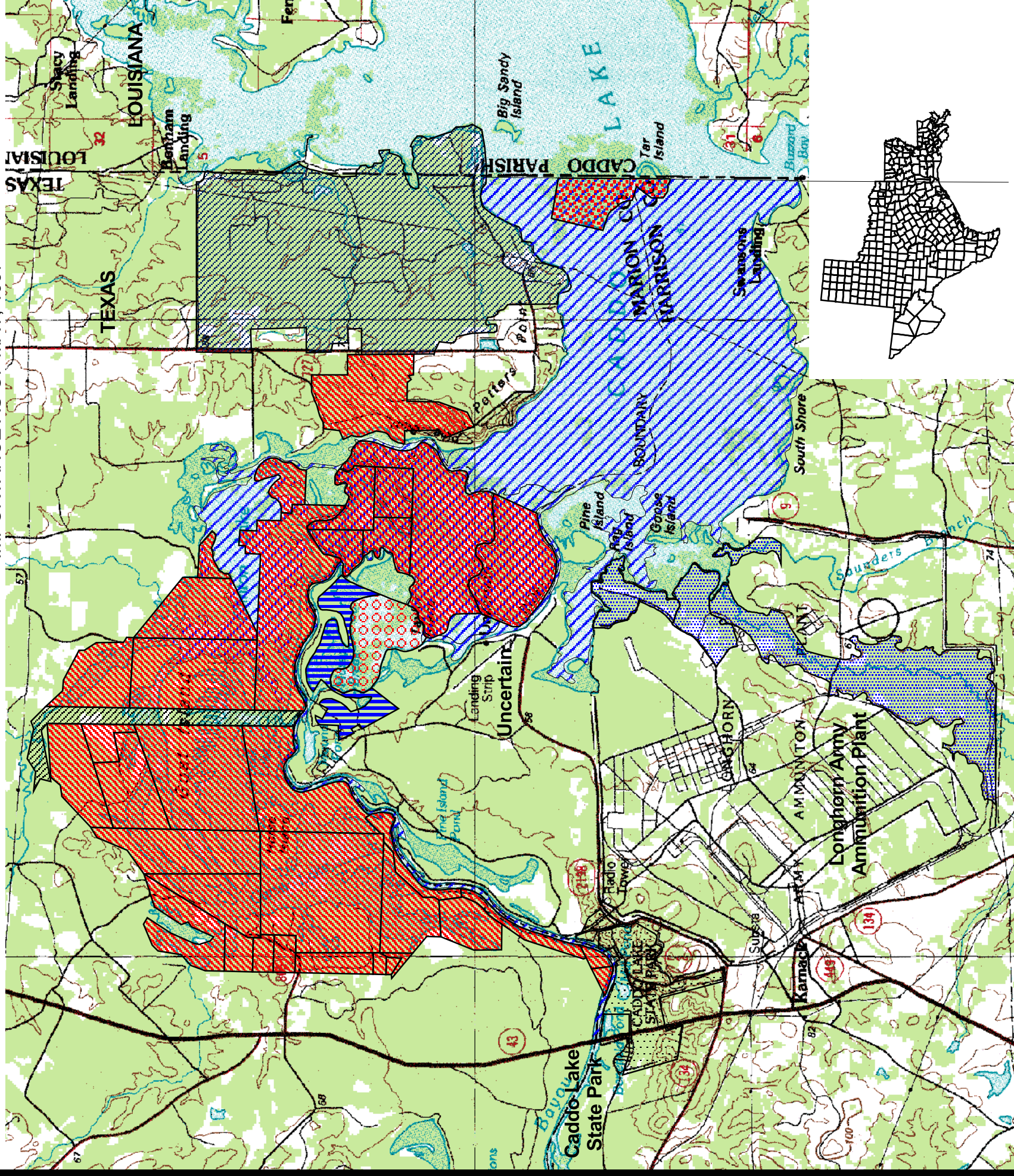


CADDO LAKE'S RAMSAR WETLANDS OF INTERNATIONAL IMPORTANCE AS OF MAY, 1997



LEGEND

Original Ramsar Designation 1993:

- TPWD Wildlife Management Area (WMA) - 6500 acres (2630 ha.)
- Ramsar Nominations for Addition 1996/1997:**
- TPWD Mossy Break Wetlands - 365 acres (148 ha.)
- Harrison Bayou/Starr Ranch Lease - 1395 acres (565 ha.)
- TGLO's Marion County Corridor - 324 acres (131 ha.)
- TGLO's Jackson's Arm Parcel - 323 acres (130 ha.)
- TGLO's Big Green Brake Parcel - 225 acres (91 ha.)
- TGLO's Submerged Mineral Acreage - 7080 acres (2865 ha.)
- Jones Family / Henley Ramsar Stewardship Parcels - 3500 acres (1416 ha.)

Total 1996/1997 Nomination Acreage - 13212 acres (5347ha.)

- TPWD Caddo Lake State Park

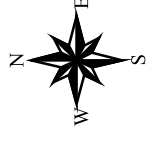
Abbreviations:

- TPWD - Texas Parks & Wildlife Department
- TGLO - Texas General Land Office
- USGS - United States Geological Survey
- BRD - Biological Resources Division
- NWRC - National Wetlands Research Center
- CLI - Caddo Lake Institute

Base Layer - USGS 7.5" Topographic Quadrangle Maps (1:24000)

- Smithland
- Trees
- Karnack
- Potters Point

Parcel boundaries and areas are approximate and are subject correction



Produced by:



Biological Resources Division
National Wetlands Research Center
Lafayette, Louisiana



Caddo Lake Institute
Marshall, Texas